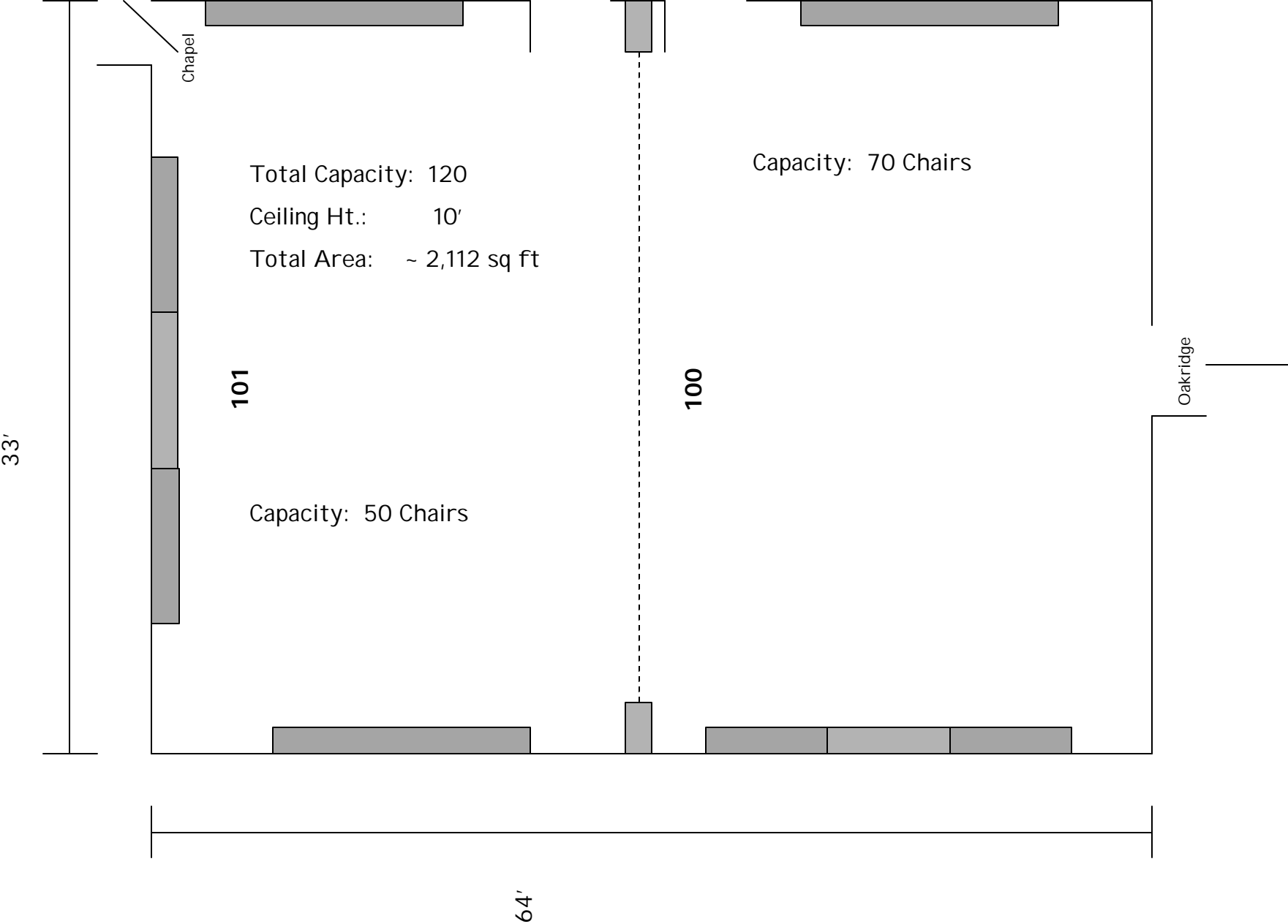
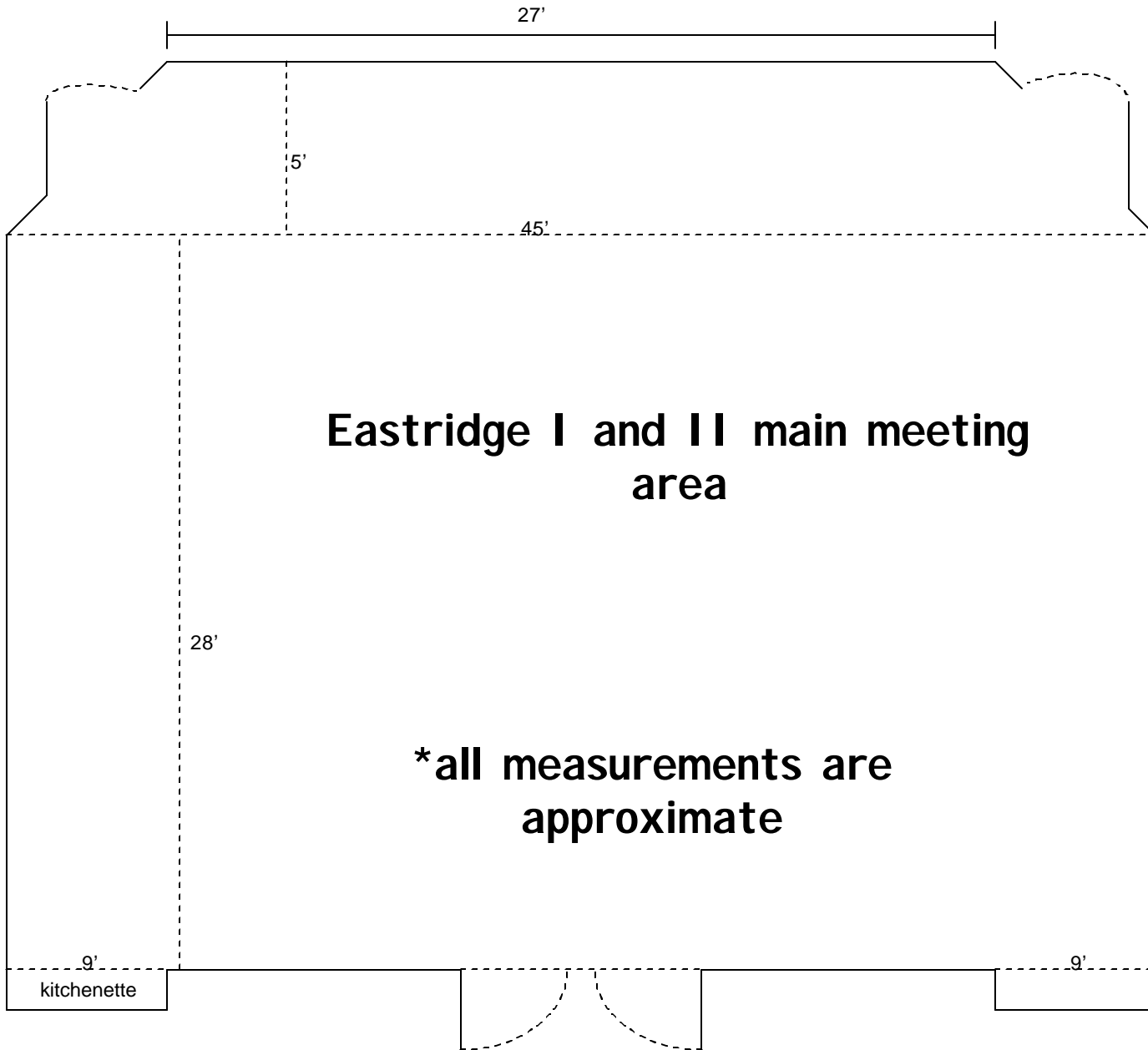
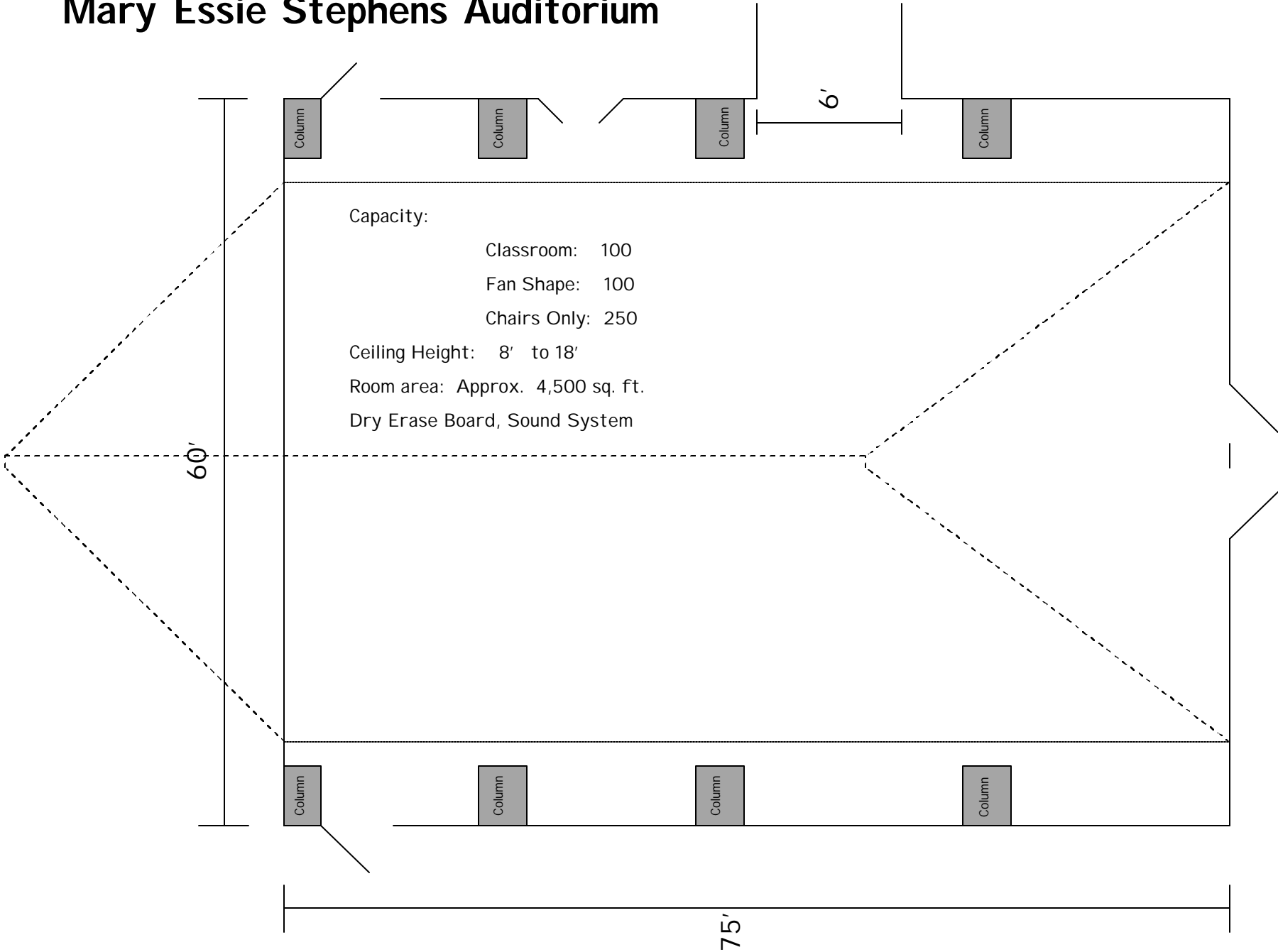


Chapel Annex

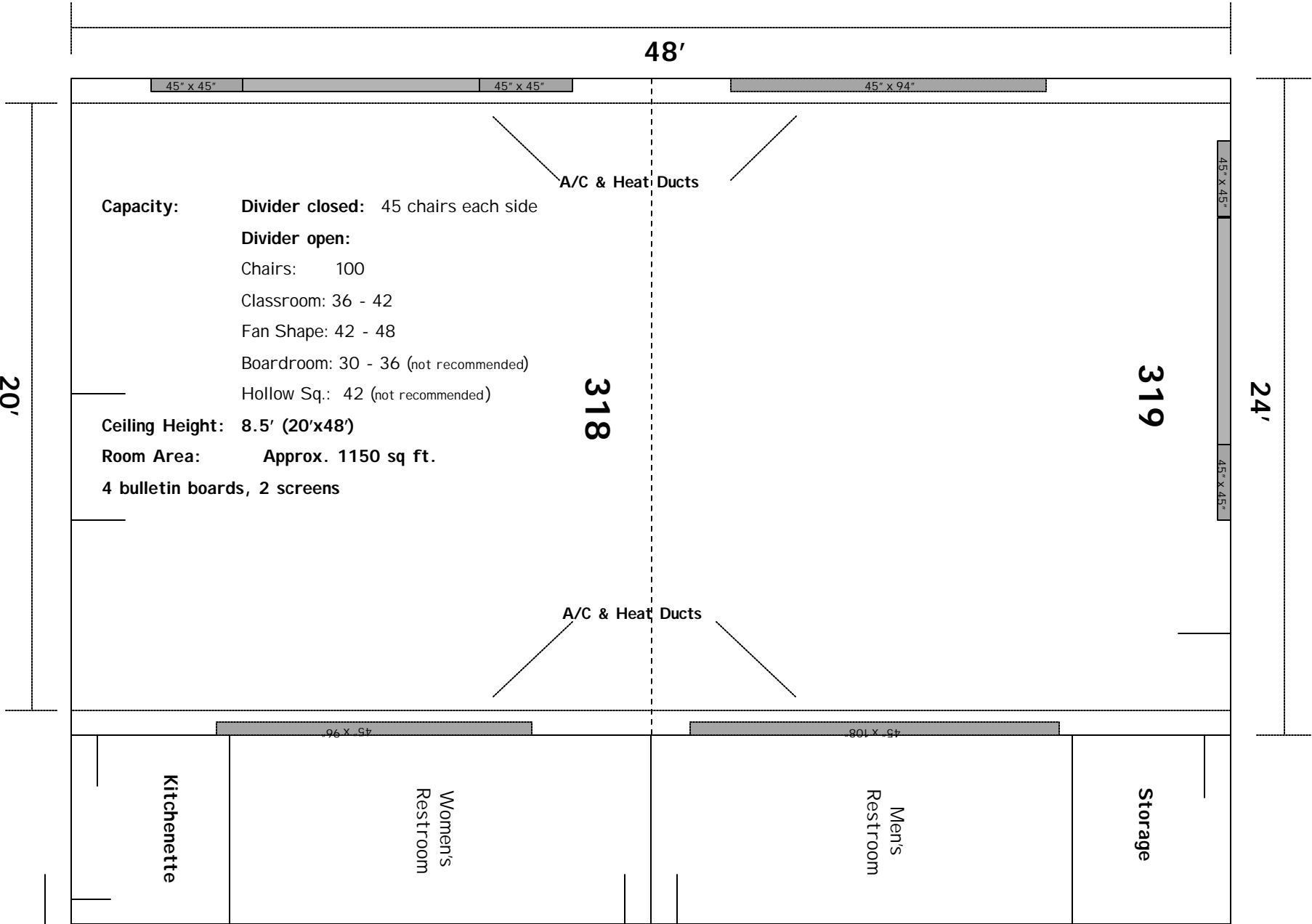




Mary Essie Stephens Auditorium



Oakridge 318/319



48'

20'

24'

45" x 45"

45" x 45"

45" x 94"

45" x 45"

45" x 45"

A/C & Heat Ducts

A/C & Heat Ducts

Capacity: **Divider closed:** 45 chairs each side
Divider open:
Chairs: 100
Classroom: 36 - 42
Fan Shape: 42 - 48
Boardroom: 30 - 36 (not recommended)
Hollow Sq.: 42 (not recommended)

Ceiling Height: 8.5' (20'x48')
Room Area: Approx. 1150 sq ft.
4 bulletin boards, 2 screens

318

319

Kitchenette

Women's Restroom

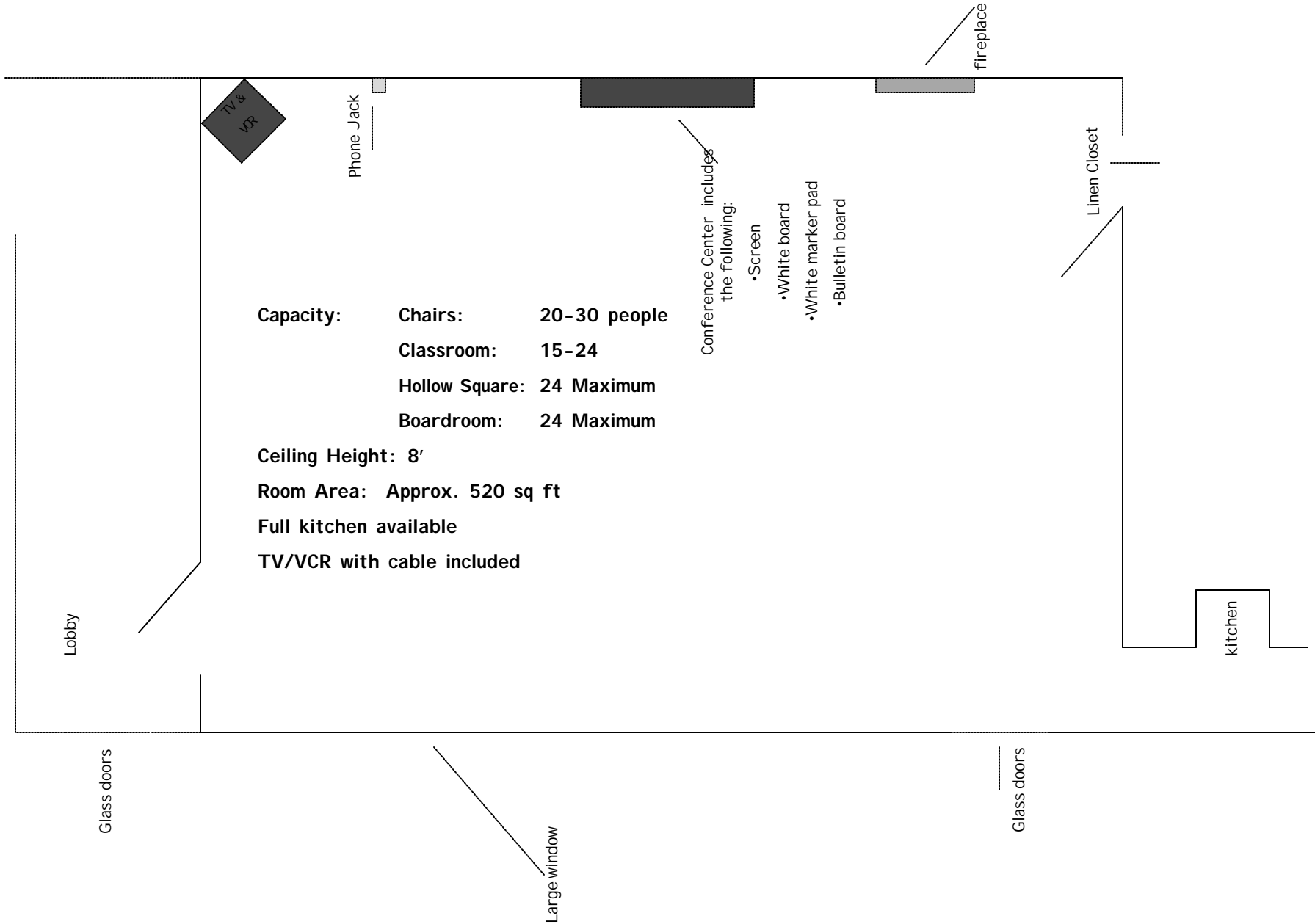
Men's Restroom

Storage

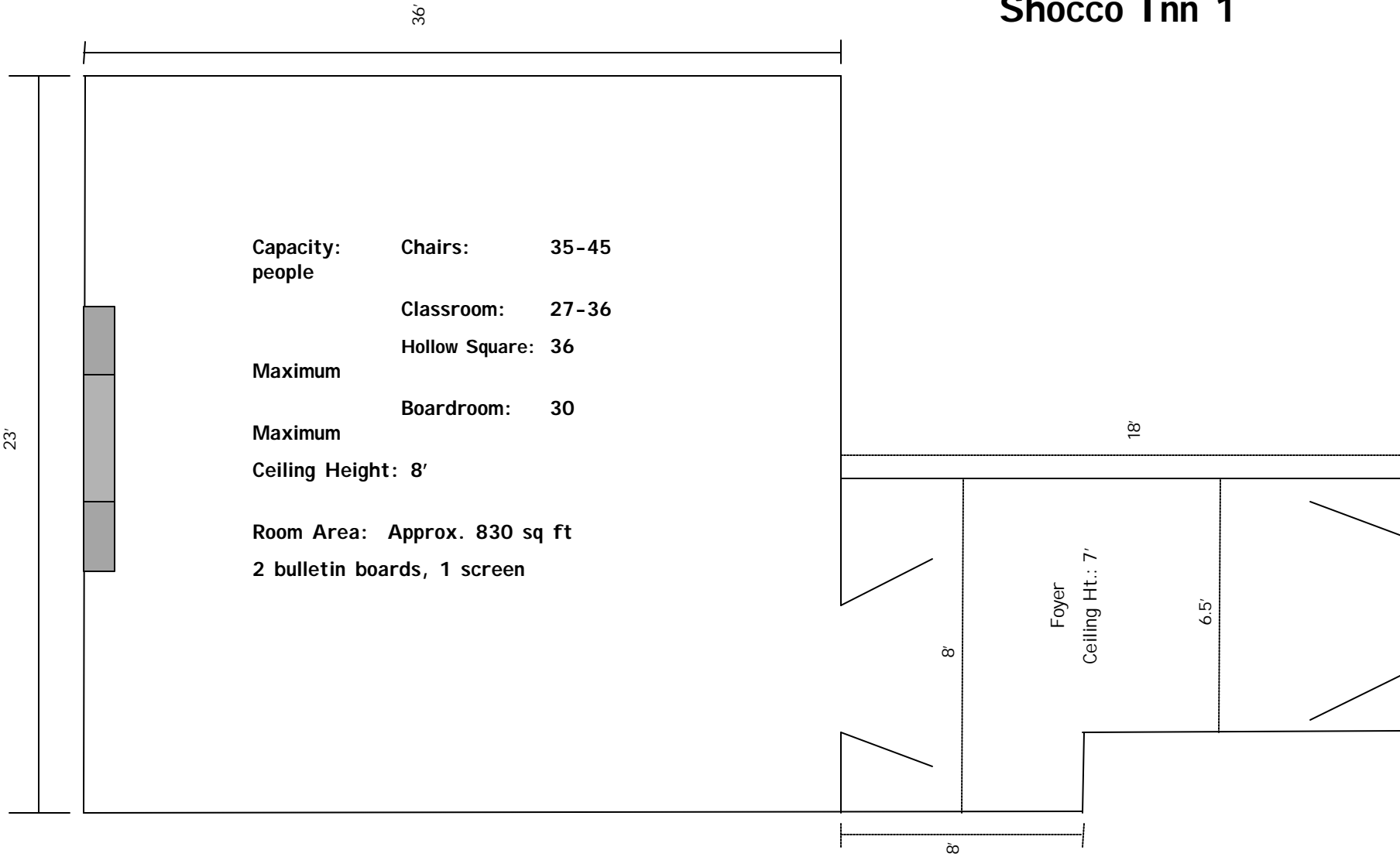
45" x 96"

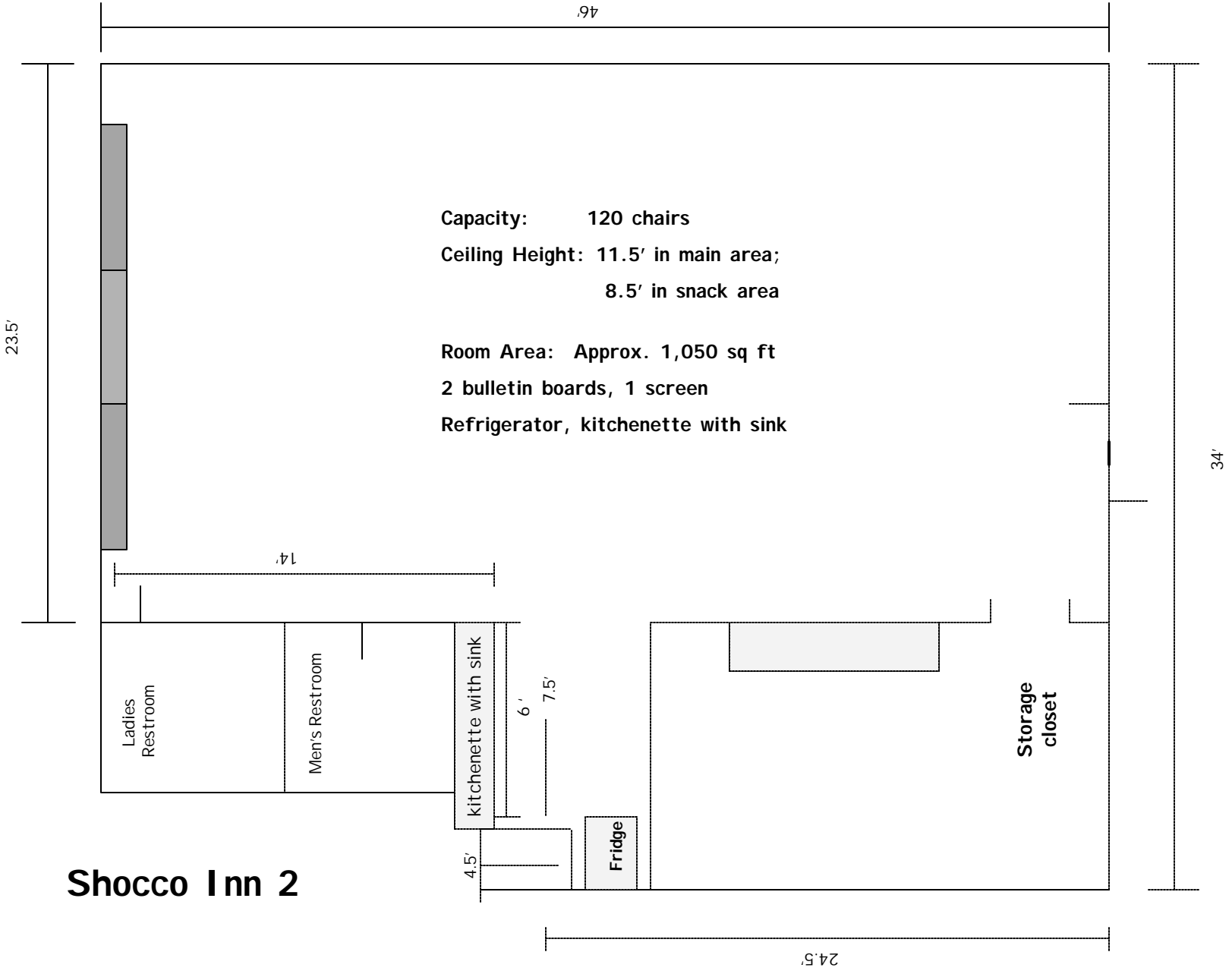
45" x 108"

Shirey Lodge



Shocco Inn 1





Shocco Inn 2

Capacity: 120 chairs
Ceiling Height: 11.5' in main area;
8.5' in snack area

Room Area: Approx. 1,050 sq ft
2 bulletin boards, 1 screen
Refrigerator, kitchenette with sink

23.5'

46'

14'

kitchenette with sink

6'

7.5'

Fridge

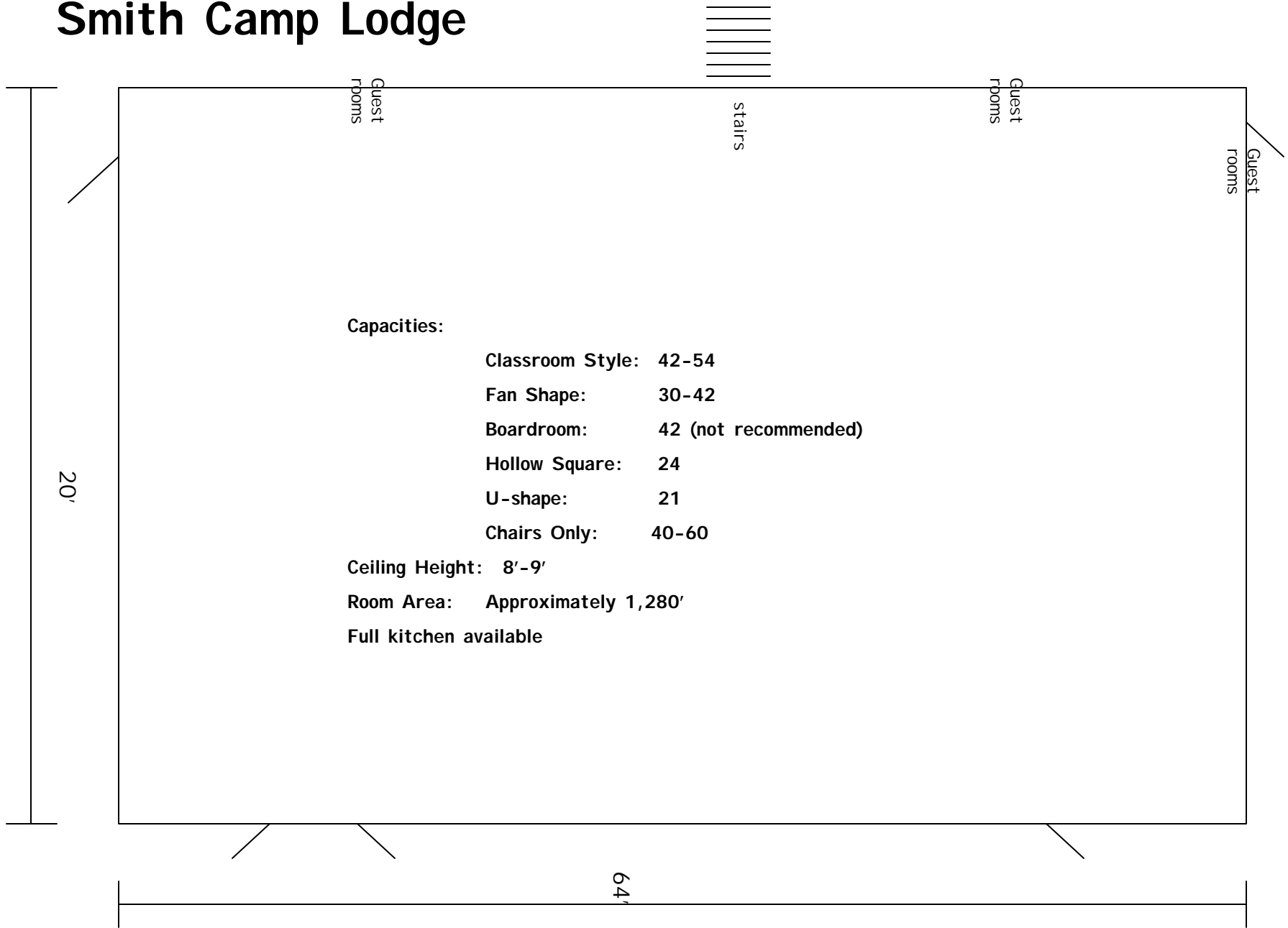
4.5'

Storage closet

34'

24.5'

Smith Camp Lodge



Twin Lodge

Meeting Room 175

